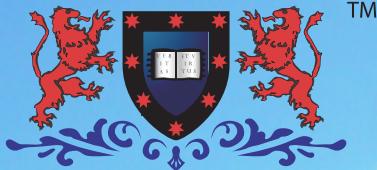


MACQUARIE GRAMMAR SCHOOL



TM

MACQUARIE GRAMMAR SCHOOL

Prospectus



WELCOME FROM THE PRINCIPAL



Macquarie Grammar School is Sydney CBD's only secular, independent, non-selective, Years 7-12 High School, that operates within the policies of the Board of Studies New South Wales.

Located just by the Queen Victoria Building, on Clarence Street, the School boasts an HSC-focused curriculum with a strong emphasis on maximising students' ATAR (Australian Tertiary Admission Rank) without the distractions found at many Schools.

The School's mission is to provide an academic-based curriculum and prepare students for the Higher School Certificate (HSC), pre-vocational and University education, and the workplace, by providing quality education to its students and fostering an enjoyment of and respect for learning.

We value every student regardless of his/her ability or genetic predisposition and, with respect for cultural diversity and inclusiveness, by demonstrating compliance with the Anti-discrimination Act that makes us distinct from the majority of 'private' Schools, in Sydney.

Macquarie Grammar has gained a reputation as a friendly School, free of bullying, violence, and illegal drugs. MGS is firmly building its quality and management processes, by adopting a culture of belonging and an attitude of gratitude.

Our HSC graduates have consistently enabled Macquarie Grammar to be included on the "HSC Honour Roll", "Mathematics Merit List", and the "Board of Studies NSW Distinguished Achievers' List", since our first year. I am not aware of any other School that has achieved this success.

Inspectors from the Board of Studies NSW reported that "Macquarie Grammar School presents a calm, friendly and professional atmosphere".

A stylized, handwritten signature in black ink, consisting of a large 'G' followed by a series of loops and a long horizontal stroke.

Dr Gauld
Principal

DBA, MBA, M Ed (TESOL), Grad Dip (IT),
Grad T Cert, B Ed, Dip Teach, Cert IV TAA,
JP NSW

A 21st Century Grammar School

Founded this century, in 2004, Macquarie Grammar School is uniquely attuned to the needs and aspirations of young students. We offer students from all walks of life the opportunity to excel in their chosen field of endeavour; be it the professions, business or academia.



Main Reception



Outdoor Terrace

Focused Curriculum puts Learning First

Macquarie Grammar's Learning First approach offers a focused curriculum that prioritises academic attainment with a "back to basics" philosophy. We consolidate learning in the core subject areas that are most important to the HSC (Higher School Certificate) and a future rewarding career. Freed from distractions that are often built into the curriculum at other schools, Macquarie Grammar School students are more likely to reach their full academic potential.



MGS Building

HSC and Tertiary Entrance Specialist

Unlike schools which offer a split academic programme, Macquarie Grammar School is 100% dedicated to helping our students to complete their HSC and receive an offer of placement in a tertiary course of education.

The Macquarie Grammar Promise: 100% Tertiary Placement Guarantee

Macquarie Grammar is the first school in NSW to make this unique promise: We are so confident of the success of our curriculum and academic programmes that we guarantee that, after graduation, all students will receive an offer of placement in a tertiary or vocational course. This promise is backed by a money-back, Year 12 school fee refund or credit.

Features of Macquarie Grammar School

Location

Located in the CBD, Macquarie Grammar's learning environment reflects the future professional surroundings, in which students will most likely work, learn and socialise throughout their adult lives. Right by the Queen Victoria Building (QVB) at Town Hall, we are central to all Sydney's transport networks.

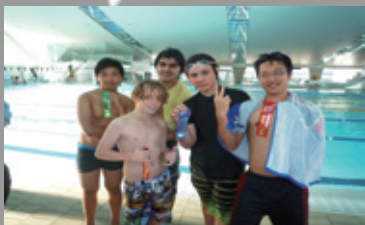
Students have immediate access to some of the world's best academic, sporting and cultural sites. The PDHPE programme operates at the Olympic-standard Ian Thorpe Aquatic Centre, the Cook-Phillip Fitness Centre, and sports' fields in the Sydney Domain. It is a short stroll to the State and Sydney Libraries, Conservatorium of Music, Powerhouse [Science and Design] Museum, the Art Gallery of NSW, Sydney Museum, Australian Museum, Law Courts, etc. Best of all, these wonderful facilities enable low-entry fees to remain allocated entirely for academic pursuits.



Tuck Shop

Student Services include:

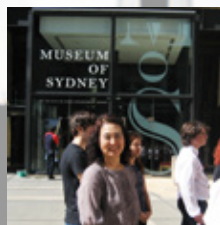
- Ongoing programmes of English language assistance;
- Career, academic and personal counselling;
- Self-access facilities and help;
- Guided learning facilities and help; and our famous
- Macquarie Coaching School.



MGS Students at Ian Thorpe Aquatic Centre



Lessons and Recreation at The Royal Botanic Gardens



Excursion to Museum of Sydney

Teaching Methods

Macquarie Grammar is big enough to offer a strong HSC portfolio, and small enough to care about the individual progress of every student. Macquarie Grammar Teachers reach out to every student, to help all students reach their full potential.

We favour communicative and student-centred approaches that also promote suitable opportunities for developing research skills, extended project work, dynamic presentations, independent learning strategies, critical thinking, and access to a wide range of learning resources including internet, audio-visual aids and libraries.



Assessments

- Students' cross-curricula progression is monitored and assessed continuously with regular feedback given to each student to maintain study skills effectively; and a positive attitude towards learning;
- Competency-based tests are also used to monitor progress in the macro skills of reading, writing, speaking and listening;
- Reports are forwarded to parents and/or guardians at the end of each Term, followed by Parent-Teacher-Student Meetings; and
- The establishment and maintenance of close, and supportive guardian and/or parental Home-School links are given high priority.



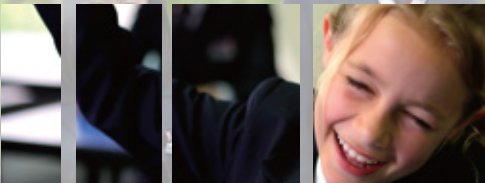
Assessment Methods

A variety of assessment methods is used including; individual case studies, individual stimulus based tasks, group presentations of a case study, group research tasks, individual research case studies, stimulus essays, analysing debates, class tests, and written examinations.

Staff Policies



The Teachers at Macquarie Grammar School are appointed for their commitment to the individual student and implementation of the Principal's award-winning Effective Teacher Model. The staff team demonstrates a dedication and loyalty that support the desired organisational culture.



All teaching staff are appropriately qualified and experienced. The School prides itself on the number of Teachers with higher degrees at Master's and Doctoral levels from universities from Australia and encourages continued professional development and life-long learning.

High School Programme Entry Requirements

English	Years 7-10	Years 11-12
IELTS	5.0	5.5
TOEFL (paper)	510	513
TOEFL (computer)	180	183

If you don't have the level of English needed for entry, you can enrol in Macquarie English's High School Preparation Programme.

Past Academic Performance

Students seeking acceptance into Macquarie English's High School Programme should submit copies of their Reports and/or official academic Certificates for assessment. Students must have completed the equivalence of the previous year (grade) in their respective country's school system, in order to be considered for enrolment.



Fees

Terms and Conditions of Business Regarding the Payment of Fees

1. All fees and charges are payable in Australian Dollars (\$A).
2. If you prefer to pay a full year's tuition fees in advance the School will be pleased to give you a 5% discount. The due date for this agreement is before 1 December, prior to commencement.
3. Late payments will incur 15% compound interest applicable immediately following the final payment day.
4. Failure to pay an account by the date when it is due may result in the student being denied access to school services and may prejudice the student's Visa status.
5. Charges for additional services including music tuition, text books, stationery ("incidental charges") are required to be paid as and when such fees are incurred.
6. Fees may be paid by credit card (MasterCard, Bankcard, Visa or American Express). Bank charges made by your bank on funds transfer will be debited to your School account.
7. The Tuition fees include all aspects of education at Macquarie Grammar School, including welfare care, extension work, gifted and remedial counselling, and most costs related to extra-curricula activities (except excursion and transport to/from off-campus commitments and entry fees).
8. Six months' notice in writing and addressed to the Principal is required of intention to withdraw a student from the School; six months' fee is charged for withdrawal without such notice.
9. All fees are subject to change without notice.
10. Enrolment of a second family member will attract 5% discount of the tuition fee and 10% discount for the third or subsequent family member.



Ski Trip



Kayaking activity

2014 Compulsory Fees

\$AUD

Application (Non-refundable)	200
Enrolment (per family--non refundable upon acceptance)	2000
Enrolment Bond (refunded upon claim received 4 wks before Yr 12 graduation or when notification of transferring to another education provider is submitted six months in advance)	2000
Annual Tuition	18000/yr
Uniform	800
Events (annual carnival, dance party, external tests)	500/yr
Text Books/ Year (may vary with subject choices)	500/yr
Overseas Students Health Cover (International students only)	480

Additional / Optional Costs (examples)

- Team Sports' uniforms
- Year 12 personalised Jersey (\$120)
- Stationery
- Camps
- Private lesson, eg music, voice, swimming
- Special subject equipment and materials
- Instrument hire
- Special events, dinners
- Skiing trips, overseas study trips
- Extra copies of School Reports
- Examination results' transcripts
- NSW Government Higher School Certificate charge Year 12 (international students only)



Welfare Care

Welfare care is the foundation of Macquarie Grammar School philosophy. A hierarchy of care is provided commencing with the Teachers, through to the Deputy Principal and the Principal. There are staff on hand who are available to assist students and parents at any time. Our experienced Student Services Officer and School Counsellor have specific responsibility for students and regularly attend meetings and seminars to remain up-to-date with all policy and welfare areas pertaining to the care of students. They are highly regarded for possessing a caring and understanding nature.

Macquarie Grammar School's Student Services Officer liaises closely with students and their parents/guardians.

The School believes that young people respond best when provided with a clear definition of their responsibility, privileges and limitations and when they are aware of the consequences of their actions. A system of positive incentives operates to recognise achievement in the areas of academia. This is a clearly defined system of sanctions for students whose performance does not meet expectations. Macquarie Grammar School has a policy of zero tolerance to illegal drugs and unacceptable behaviour. The students' general well-being is nurtured by providing the safe, secure and supportive environment needed to maximise their studies at Macquarie Grammar School including:

- Personal counselling;
- Discipline when necessary (in accordance with the discipline policy);
- Ensuring that stakeholders are kept informed about students' progress; and
- Encouraging interaction between family and School.

Time is made available for the parents and/or guardians if they have any concern about a student.



Safety and Security Presentation

Years 7-10 High School Programme

CRICOS Code 077151D [Junior Secondary]

Delivery is at 225 Clarence Street, involving supervised face-to-face teaching in classrooms conducted in English, on a full-time basis, including presentations, student demonstrations, exercises, group work, projects, research, site visits, and guest presentations.

For Years 7-10, Macquarie Grammar School offers subjects in the Key Learning Areas of the Board of Studies NSW curriculum, ie the traditional subjects of English; Mathematics; Science; Geography; History; Personal Development, Health and Physical Education; Visual Arts; Commerce; Drama; Technology and Music are taught. The scope and sequence documents and teaching programmes are produced by the Macquarie Grammar School teaching staff, in compliance with the Board of Studies NSW.

The School also provides the mandatory 100 hours of tuition in a language other than English in Stage 4 (Years 7-8) which is Chinese (Mandarin). Other languages are offered at Macquarie Coaching School or through payment of additional tuition fees to the Open High School, Sydney.



Entry Requirements for Years 7-10

- Students must have completed the previous year (grade) or its equivalence in their respective countries;
- A guardian and an accommodation inspection for all students who are under 18 years of age;
- Approved/recognised High School Preparation or IELTS 5.0;
- Certified copies of the previous 2 Years' School reports that list subjects studied and marks/grades achieved with English translations;
- Students who are able to demonstrate the entry requirements for Year 10 and who have completed Year 10 or its equivalence are able to start at any time of the year;
- Students from Assessment Levels 3 & 4 countries may have additional restrictions; and
- Direct entry from Macquarie Grammar School's High School Preparation Programme upon satisfactory completion of this programme.

Course Credit

MGS offers course credit if a student demonstrates written knowledge of equivalent subject content and duration. MGS will determine the entry requirements for all students, including any on-shore transfers from another school.



Year 11 (Preliminary Course)

For Years 11 and 12, subjects are defined as 'Units' for the NSW Higher School Certificate. Each candidate is required to complete 12 Units in Year 11 and a minimum of 10 Units in Year 12. University entrance is calculated on a student's best 10 Units, including 2 Units of English. All subject choices should be discussed with the Deputy Principal or Principal.

Delivery is at 225 Clarence Street, Sydney, involving supervised face-to-face teaching in classrooms conducted in English, on a full-time basis, including presentations, student demonstrations, exercises, group work, projects, research, site visits, and guest presentations.

Macquarie Grammar School offers a highly popular and successful Macquarie Coaching School on evenings and weekends.

The Year 11 Course is the first part of the two-year programme that leads to the NSW Higher School Certificate, the most recognised pathway for University entry. After satisfactorily completing the three-term Preliminary programme, Year 11 students are eligible to commence Year 12.

Year 11 Entry Requirements

- Students must have satisfactorily completed Year 10 or its equivalence;
- A guardian and an accommodation inspection for all students under 18 years of age;
- Approved/recognised High School Preparation or IELTS 5.5 or its equivalence;
- Certified copies of the previous 2 years' School reports that list subjects studied and marks/grade achieved with English translations;
- Students are able to commence their studies throughout the School year, provided they have completed Year 11 or its equivalence;
- Students from Assessment Levels 3 & 4 countries may have additional restrictions;
- Direct entry from Macquarie Grammar School's High School Preparation Programme upon satisfactory completion of this programme.



Year 12 (Higher School Certificate)

CRICOS Code 077152C [Senior Secondary]

The Higher School Certificate (HSC) Course begins in the fourth Term of Year 11 and continues through to Year 12, in the following year, up to the HSC Examinations, ie for four+ Terms, to Term 4 of Year 12. Students are required to study a minimum of 10 Units for the HSC. The only compulsory subject is English. Students continue to study their elective subjects from Year 11. Assessments in Year 12 are very important because they form a significant part of the student's overall HSC result.

At the end of Year 12, a graduation ceremony is held. The Board of Studies NSW issues the Higher School Certificate directly to each student, by the end of the year.



Leadership Day at Government House



Year 12 Entry Requirements

- Students must have satisfactorily completed the preliminary course Year 11;
- A guardian and an accommodation inspection for all students less than 18 years of age;
- Students must be able to start the HSC Course in Term 4 of Year 11;
- Certificate copies of the previous 2 years' School reports that list subjects studied and marks/grades achieved with English translations;
- Students who complete Year 11 at another Australian institution and who seek entry into Macquarie Grammar School for Year 12 will be considered on an individual basis; and
- Students from Assessment Levels 3 & 4 countries may have additional restrictions.



Academic Calendar 2014

TERM I	Tuesday, 21 January 2014	Thursday, 27 March 2014
Recess	Friday, 28 March 2014	Monday, 14 April 2014
TERM II	Tuesday, 15 April 2014	Thursday, 19 June 2014
Recess	Friday, 20 June 2014	Monday, 7 July 2014
TERM III	Tuesday, 8 July 2014	Thursday, 11 September 2014
Recess	Friday, 12 September 2014	Monday, 29 September 2014
TERM IV	Tuesday, 30 September 2014	Tuesday, 2 December 2014
Recess	Wednesday, 3 December 2014	Monday, 19 January 2015

Academic Calendar 2015

TERM I	Tuesday, 20 January 2015	Thursday, 26 March 2015
Recess	Friday, 27 March 2015	Monday, 13 April 2015
TERM II	Tuesday, 14 April 2015	Thursday, 18 June 2015
Recess	Friday, 19 June 2015	Monday, 6 July 2015
TERM III	Tuesday, 7 July 2015	Thursday, 10 September 2015
Recess	Friday, 11 September 2015	Monday, 28 September 2015
TERM IV	Tuesday, 29 September 2015	Tuesday, 8 December 2015
Recess	Wednesday, 9 December 2015	Monday, 18 January 2016

“Calm, friendly and professional atmosphere”

Board of Studies, NSW



MGS Students at FILEX Convention



Sydney Library



- | | | |
|----------------------------------|-------------------------------|----------------------------------|
| 1. Ian Thorpe Aquatic Centre | 6. Art Gallery of NSW | 11. Australian Security Exchange |
| 2. Cook - Phillip Fitness Centre | 7. Museum of Contemporary Art | 12. Reserve Bank of Australia |
| 3. Australian Museum | 8. Conservatorium of Music | 13. State Library of NSW |
| 4. Museum of Sydney | 9. The Law Courts | 14. Sydney Library |
| 5. Powerhouse Museum | 10. Parliament House | 15. The Domain |
| | | 16. The Royal Botanic Gardens |

225 Clarence Street Sydney NSW 2000
 PO Box Q1259 Queen Victoria Building NSW 1230
 Tel (A): +61 2 8228 3022

www.macquariegrammarschool.edu.au

MGS CRICOS Provider Code: 03330B (NSW)
 ABN: 97 141 160 483 / ACN: 141 160 483